

MPC-M25

MPC Media Presentation Controller™ M25

Crestron MPC is a family of 2-Series control systems designed for installation in a wall or podium, delivering the industry's best multimedia room control technology in a convenient, space-saving design. Perfect for classrooms, meeting rooms, lecture halls, and training facilities, the MPC-M25 provides a fully-programmable user interface featuring an attractive and intuitive layout of pushbuttons with customizable backlit labeling, volume control, 5-way navigation pad, and wireless remote capability.

Available in white or black, the MPC-M25 is constructed to handle the rigors of everyday use in a corporate or educational environment. Numerous programmable control ports afford plentiful connectivity for a roomful of audio, video, and lighting equipment. The onboard **e-Control®** Web server provides for complete integration as part of a facility-wide managed control network.

Control...Simplified

The MPC-M25 is engineered to be easy to integrate and use, yet versatile enough to suit each application perfectly. Its 15 programmable "hard key" buttons can be freely programmed for system power, input source selection, transport control, lighting presets, and any other functions. Custom backlit labeling of the buttons is facilitated using an assortment of pre-printed labels or Crestron Engraver software. The 5-way directional navigation pad enables full control of DVD players, displays, and other devices that utilize an onscreen menu. Adjusting audio volume and other parameters is enabled using the continuous-turn control knob and LED bargraph.

Configuring a complete MPC media presentation control solution is simplified using Crestron **SystemBuilder™** software, allowing limitless programmability from the award-winning platform that's familiar to every Crestron dealer. The MPC Wizard included in SystemBuilder enables setup of a full-featured presentation system complete with lighting control and **RoomView®** remote management without requiring any programming. Uploading and updating a facility full of MPC systems is managed easily over the network, or individually via the front panel USB port.

Wireless Remote

A range of options is available for adding wireless remote control to the MPC system. Its built-in IR receiver allows use of any Crestron IR wireless touchpanel or handheld remote without requiring a separate receiver or gateway. For greater range and freedom of movement, MPC also supports Crestron's full line of RF wireless and WiFi based products.

Wired Expansion

Adding a second control panel or just adding a few more buttons is easy using the **MP-B10** and **MP-B20** Media Presentation Button Panels. Of course, with Cresnet® and Ethernet built-in, the MPC-M25 works seamlessly with Crestron's entire line of keypads and touchpanels, lighting dimmers and shade controllers, signal processors and switchers, and much more.

Built-in Control Ports

Through a host of onboard control ports, the MPC-M25 interfaces directly with the video display or projector, DVD player, TV receiver, projection screen, lift, occupancy sensor, and other devices in the room. In addition to Cresnet and high-speed Ethernet, there are two bidirectional RS-232 COM ports, two IR/serial ports, six isolated relays, and four input ports right on the rear panel.

Audio and Video Control



device with computers and other sources connected directly to it. But like any 2-Series control system, MPC is fully scalable to suit larger applications with several program sources, microphones, or even multiple displays. Simply add a **C2N-VEQ4** module to enable 4 channels of audio volume and EQ control. Or, use any of Crestron's **QuickMedia®** wall plate and FlipTop interfaces, switchers, and receivers for a total signal routing, processing, and amplification solution.

Ethernet and e-Control®2

Built-in 10/100 Ethernet facilitates secure high-speed network connectivity, enabling extensive capabilities for remote system maintenance and control, and providing an interface to other Crestron control systems. The onboard Web server provides the foundation for Crestron's exclusive **e-Control 2** Xpanel technology, providing secure IP-based remote control. SSL encryption prevents hackers from breaching the system and accessing its controls.

RoomView® and SNMP

The MPC-M25 communicates directly with Crestron's exclusive **RoomView** help desk software, the industry's most comprehensive facility-wide solution for remote monitoring and asset management. Built-in SNMP support also enables integration with third-party network management software, allowing full control and monitoring from the IT Help Desk or NOC in a format that's familiar to IT personnel.

Cresnet® Slave Mode

Selectable Cresnet Slave Mode enables the MPC-M25 to become a Cresnet keypad controller and expansion module as part of a larger Crestron system, providing a deluxe user-interface with local control ports built in for interfacing to nearby devices.

Ambient Light Sensor

The MPC-M25's built-in light sensor has a range of uses, from controlling its own backlight intensity, to providing ambient lighting level data to a central building management system.

> [Wall mount 2-Series control system](#)

> [15 programmable buttons with LED feedback](#)

> [Customizable backlit button labels](#)

MPC-M25 MPC Media Presentation Controller™ M25

- > 5-way navigation pad
- > Volume control knob and LED bargraph
- > Built-in IR receiver and light sensor
- > 2 RS-232, 2 IR, 4 input, & 6 relay control ports
- > Cresnet and 10/100 Ethernet
- > e-Control Web server
- > RoomView and SNMP support
- > SSL (Secure Sockets Layer) network protection
- > Setup via SystemBuilder software
- > Rugged construction
- > 3-gang wall-mountable
- > Includes external Cresnet power supply

SPECIFICATIONS

Processor

CPU: 32-bit Freescale ColdFire® Microprocessor

Memory

SDRAM: 32 MB

NVRAM: 256 KB

Flash: 8 MB

Operating System

Real-time, preemptive multi-threaded/multitasking kernel; FAT32 file system with long names; supports **SIMPL™ Windows** and **SIMPL+®**

Ethernet

10/100BaseT, auto-negotiating, full/half duplex, static IP or DHCP, DNS, SSL, TCP/IP, UDP/IP, CIP, SMTP, SNMP, built-in Web server and e-mail client; supports Crestron **e-Control@2 XPanel** and **RoomView®** applications

Connectors

NET: (2) sets of (4) captive screw terminals; Cresnet port and 24 Volt DC power input with parallel pass-thru; Master/Slave selectable

LAN: (1) 8-wire RJ45 with 2 LED indicators;

10/100BaseT Ethernet port;

Green LED indicates link status;

Yellow LED indicates Ethernet activity

COM 1: (5) captive screw terminals;

Bidirectional RS-232 port;

Up to 115.2k baud; hardware and softwarehandshaking support

COM 2: (3) captive screw terminals;

Bidirectional RS-232 port;

Up to 115.2k baud; software handshaking only

RELAYS 1 - 6: (9) captive screw terminals comprising (6) normally open, isolated relays (every two share a common);

Rated 1 Amp, 30 Volts AC/DC;

MOV arc suppression across contacts

IR 1 - 2: (4) captive screw terminals comprising (2) IR/Serial output ports;

IR output up to 1.2 MHz;

1-way serial TTL/RS-232 (0-5 Volts) up to 115.2k baud

INPUTS 1 - 4: (5) captive screw terminals comprising (4) digital or analog input ports (referenced to GND);

Digital Input: Rated for 0-24 Volts DC, input impedance 20k ohms, logic threshold 1.25 Volts DC;

Analog Input: Rated for 0-10 Volts DC, protected to 24 Volts DC maximum, input impedance 20k ohms;

Programmable 5 Volts, 2k ohms pull-up resistor per pin

Computer: (1) USB Type B female (behind front cover);

USB 1.1 computer console port

Ground: (1) flying lead, chassis ground wire

Controls and Indicators

Hard Keys: (15) Programmable pushbuttons with backlit labeling

Feedback Indicators: (15) Programmable red LEDs (1 per hard key)

Navigation Pad: (5) Programmable pushbuttons for 4-way directional navigation and "enter"

VOLUME: (1) Programmable continuous turn rotary encoder

Bargraph: (1) Programmable red 5-segment LED bargraph

HW-R: (1) Recessed miniature pushbutton for hardware reset (reboots the processor)

SW-R: (1) Recessed miniature pushbutton (behind front cover) for software reset (restarts the SIMPL program)

Light Sensor

Photosensor, programmable for auto-dimming of front panel labeling and other functions

IR Receiver

Reception Frequency: 36 to 38 kHz IR

Formats: Crestron format, RC5

Range: Up to 50 ft line of sight (typical), dependent upon angle, obstructions, IR interference, and IR remote signal strength

Power Requirements

Cresnet Power Usage: 9 Watts (0.375 Amps @ 24 Volts DC);

PW-2407RU power supply included

Available Cresnet Power: 9 Watts using **PW-2407RU** (included)

Environmental

Temperature: 32° to 104°F (0° to 40°C)

Humidity: 10% to 90% RH (non-condensing)

Heat Dissipation: 17 BTU/hr

Enclosure

Faceplate: High-impact plastic, black or white, with polycarbonate label overlay

Chassis: Injection-molded plastic with steel mounting plate

Mounting: Requires 3-gang plaster ring or electrical box (≥2.5 inch deep recommended)

Dimensions

Height: 4.50 in (11.43 cm)

Width: 6.70 in (17.02 cm)

Depth: 2.23 in (5.67 cm)

Weight

1.33 lb (0.61 kg)

MPC-M25 MPC Media Presentation Controller™ M25

Available Models

MPC-M25-B-T: Media Presentation Controller™ M25, Black

MPC-M25-W: Media Presentation Controller™ M25, White

Included Accessories

PW-2407RU 18 Watt Cresnet Power Supply, US/International

[Included Quantity for MPC-M25-B-T, MPC-M25-W: 1]

Available Accessories

MP/MPC/IPAC_FRONT_LABEL_ENGRAVED-B-T: Custom Engravable Backlit Labels, Black

MP/MPC/IPAC_FRONT_LABEL_ENGRAVED-W: Custom Engravable Backlit Labels, White

TTK-MP/MPC/IPAC-B-T: Table Top Kit, Black

TTK-MP/MPC/IPAC-W: Table Top Kit, White

SMK-MP/MPC/IPAC: Swivel Mount Kit

CNSP-XX: Custom Serial Interface Cable

IRP2: IR Emitter Probe

MP-B10-B-T: Media Presentation Button Panel B10, Black

MP-B10-W: Media Presentation Button Panel B10, White

MP-B20-B-T: Media Presentation Button Panel B20, Black

MP-B20-W: Media Presentation Button Panel B20, White

MP-WP100-B: Media Presentation Wall Plate - RCA Composite Video w/RCA Stereo Audio, Black

MP-WP100-W: Media Presentation Wall Plate - RCA Composite Video w/RCA Stereo Audio, White

MP-WP110-B: Media Presentation Wall Plate - Mini-DIN S-Video w/RCA Stereo Audio, Black

MP-WP110-W: Media Presentation Wall Plate - Mini-DIN S-Video w/RCA Stereo Audio, White

MP-WP120-B: Media Presentation Wall Plate - RCA Component Video w/RCA Stereo Audio, Black

MP-WP120-W: Media Presentation Wall Plate - RCA Component Video w/RCA Stereo Audio, White

MP-WP125-B: Media Presentation Wall Plate - RCA Component & Composite Video w/2x RCA Stereo Audio, Black

MP-WP125-W: Media Presentation Wall Plate - RCA Component & Composite Video w/2x RCA Stereo Audio, White

MP-WP130-B: Media Presentation Wall Plate - DB15HD Computer VGA w/Mini-TRS Stereo Audio, Bulkhead, Black

MP-WP130-W: Media Presentation Wall Plate - DB15HD Computer VGA w/Mini-TRS Stereo Audio, Bulkhead, White

MP-WP131-B: Media Presentation Wall Plate - DB15HD Computer VGA w/Mini-TRS Stereo Audio, Breakout, Black

MP-WP131-W: Media Presentation Wall Plate - DB15HD Computer VGA w/Mini-TRS Stereo Audio, Breakout, White

MP-WP140-B: Media Presentation Wall Plate - DVI-I w/Mini-TRS Stereo Audio, Black

MP-WP140-W: Media Presentation Wall Plate - DVI-I w/Mini-TRS Stereo Audio, White

MP-WP150-B: Media Presentation Wall Plate - HDMI™ w/Mini-TRS Stereo Audio, Black

MP-WP150-W: Media Presentation Wall Plate - HDMI™ w/Mini-TRS Stereo Audio, White

MP-WP152-B: Media Presentation Wall Plate - HDMI™, Black

MP-WP152-W: Media Presentation Wall Plate - HDMI™, White

MP-WP160-B: Media Presentation Wall Plate - DisplayPort w/Mini-TRS Stereo Audio, Black

MP-WP160-W: Media Presentation Wall Plate - DisplayPort w/Mini-TRS Stereo Audio, White

MP-WP162-B: Media Presentation Wall Plate - DisplayPort, Black

MP-WP162-W: Media Presentation Wall Plate - DisplayPort, White

MP-WP180-B: Media Presentation Wall Plate - QuickMedia®, Black

MP-WP180-W: Media Presentation Wall Plate - QuickMedia®, White

MP-WP185-B: Media Presentation Wall Plate - DigitalMedia™ CAT, Black

MP-WP185-W: Media Presentation Wall Plate - DigitalMedia™ CAT, White

MP-WP186-B: Media Presentation Wall Plate - DigitalMedia™ Fiber, Black

MP-WP186-W: Media Presentation Wall Plate - DigitalMedia™ Fiber, White

MP-WP190-B: Media Presentation Wall Plate - Cresnet®, Black

MP-WP190-W: Media Presentation Wall Plate - Cresnet®, White

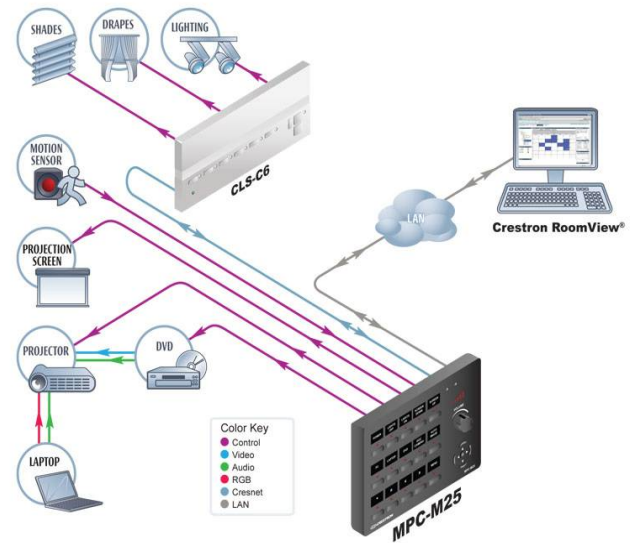
MP-AMP30: Media Presentation Audio Amplifier

SW-ROOMVW-ENT: RoomView® Express - Remote Help Desk and Resource Management Software

SW-ROOMVW-SERVER: RoomView® Server Edition - Enterprise Management and Scheduling Software

Typical MPC-M25 Application

MPC-M25 Application Example



CRESTRON

MPC-M25 MPC Media Presentation Controller™ M25

